

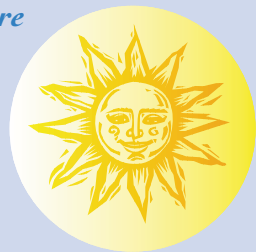


The original, popular and revolutionary light-activated toothbrush from Japan with superior plaque removing ability - proven by published clinical trials.

A Revolution in Dental Care!

It looks like an ordinary toothbrush, but closer examination reveals a rod that runs through the replaceable bristle head and into the handle. This metal rod is the secret of Soladey-2™. It's made of a patented semiconductor material that when activated by light produces electrons that help to remove dental plaque and improve oral hygiene.

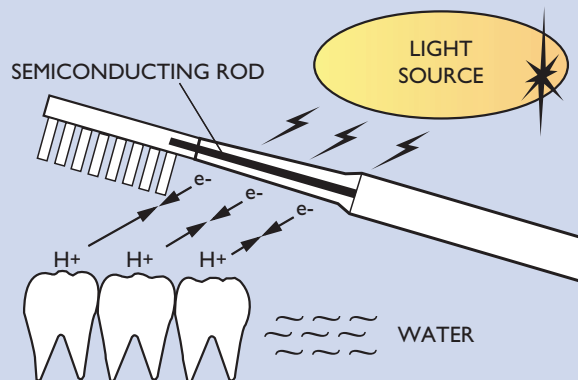
In Japan over 2 million Soladey toothbrushes and 5 million replacement heads are sold each year!



How it works

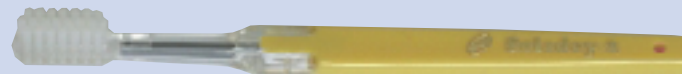
When exposed to any light source (a fluorescent bathroom light, a plain light bulb, or sunlight), the photosensitive titanium rod inside Soladey converts light into negatively charged electrons (ions). The rod releases these ions, which blend with saliva to attract positive (hydrogen) ions from the acid in the dental plaque.

The acid is then neutralised and plaque is disintegrated - a scientific approach to a cleaner and healthier mouth! Toothpaste is not required as water (saliva) is the active ingredient - oral hygiene now becomes not only natural, but also economical!



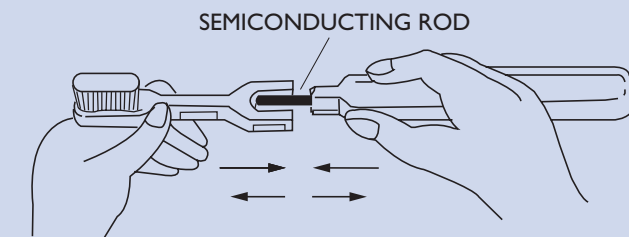
How to use Soladey

After wetting the bristles and semiconductor with water, brush your teeth lightly and thoroughly in the same way as with an ordinary toothbrush. You may, if you wish, use a very small amount of your preferred toothpaste on the bristles, although this is not necessary with Soladey. Make certain there is always an adequate light source (natural or artificial) on the semiconductor rod as this is needed for activation. If necessary the mouth should be kept partly open while brushing.



With sensible care, the handle and rod will last for years, requiring only inexpensive replaceable heads. This means that you can use the Soladey toothbrush at a cost comparable to a regular toothbrush.

To keep your Soladey toothbrush operating at maximum efficiency, replace the brush portion as often as you would replace a regular toothbrush. The diagram below illustrates the proper method of replacing the brush. Pull the head and handle apart along the axis. Do not twist or bend the head and handle while changing the brush.



Benefits

- Superior plaque removing ability providing improved oral hygiene
- Teeth feel and look cleaner
- Environmentally friendly using ionic technology - no need to use toothpaste
- Using changeable heads, Soladey is affordable and economical
- Proven effectiveness by millions of users and by published controlled clinical trials

